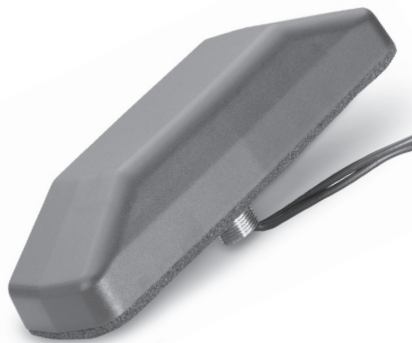


CELLULAR / PCS MULTI BAND



Low profile multi band antenna.

MODEL	FREQUENCY
LP800/19/2400	824 - 960 / 1710 - 1990 / 2400 MHz

SPECIFICATIONS	
GAIN	0 dBd / 0 dBd / 0 dBic
TYPE	Low Profile
VSWR	< 2.0:1 / <2.0:1 / <2.0:1
IMPEDANCE	50 Ohms
POLARIZATION	Vertical/Vertical/Vertical
COLOR	Black
COAX	16'1" RG-174 / 16'1" RG-174
DIMENSIONS	7.6" L X 3.4" W x 1.3" D
OPERATING TEMP	-40° to +185° F
CONNECTOR	Order separately
MOUNTING	Direct Feed 3/4" hole



NMO transit style multi band antenna for SMR/Cellular/PCS and 2.4 GHz data applications.

MODEL	FREQUENCY
LPT825/19NMOHF	806-960 / 1710-1990 / 2400 MHz
LPT825/19NMOHFW	806-960 / 1710-1990 / 2400 MHz

Note: This antenna requires an NMOHF-style mount.

SPECIFICATIONS	
GAIN	3 dBi / 4 dBi / 3 dBi
TYPE	Low profile
VSWR (see bandwidth)	< 2.0:1
POWER RATING	10 Watts
COLOR	Black or White
COAX	Order separately
BASE SIZE	1.5" diameter
MAX HEIGHT	3.5"



Magnetic mount dual band Cellular/PCS factory tuned antenna with 3 dBd on both bands.

MODEL	FREQUENCY	CONN.
MMC/P3EFME	824-960/1850-1990 MHz	FME
MMC/P3EMPL	824-960/1850-1990 MHz	MPL
MMC/P3ETNC	824-960/1850-1990 MHz	TNC

SPECIFICATIONS	
GAIN	4 dBi / 4 dBi
TYPE	5/8 over 1/4 wave
VSWR (see bandwidth)	2.0:1 or less
BANDWIDTH @ 2.0:1	Cellular: 10% / PCS: 15%
POWER RATING	7 Watts
COLOR	Black
PULL STRENGTH	54 lbs
WHIP	3.9"
COAX	12' RG-58/U Dual Shield
BASE SIZE	2"
MAX HEIGHT	5"